

Port Of Corpus Christi Authority  
of Nueces County

**wood.**

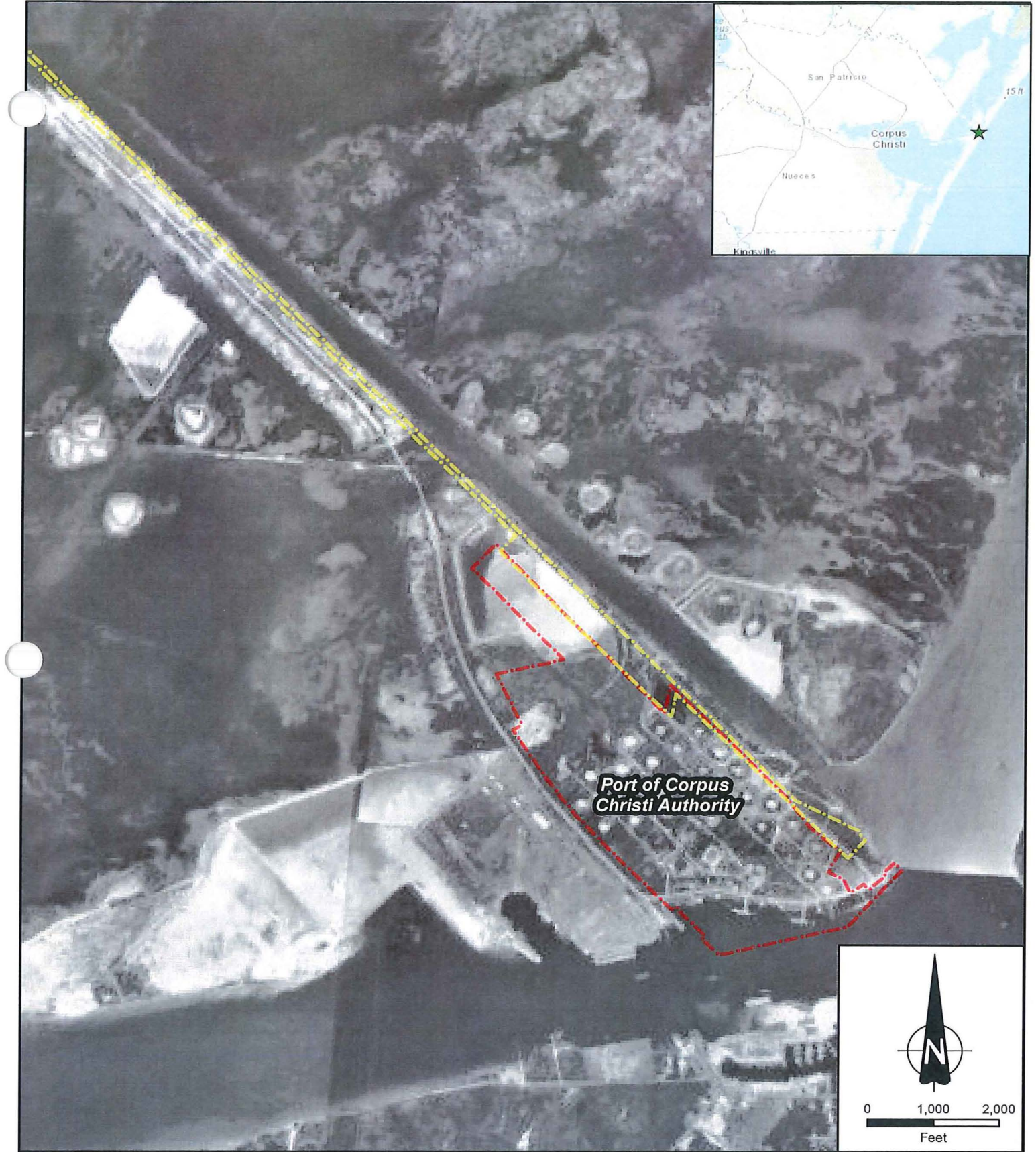
-  Right-Of-Way
-  Property Boundary
-  Site Location

**Historical Imagery 1955**


Service Layer Credits: Image NASA, Image Texas General Land Office, Google Earth Pro, Imagery Date: 12/31/1955, Date: 06/13/2019

DATE	JUNE 2019
SCALE	1" = 2,000'
PROJECT NO.	6703180051
FIGURE	1

DRAWN BY: SD CHECKED BY: JF



Port Of Corpus Christi Authority  
of Nueces County

-  Right-Of-Way
-  Property Boundary
-  Site Location

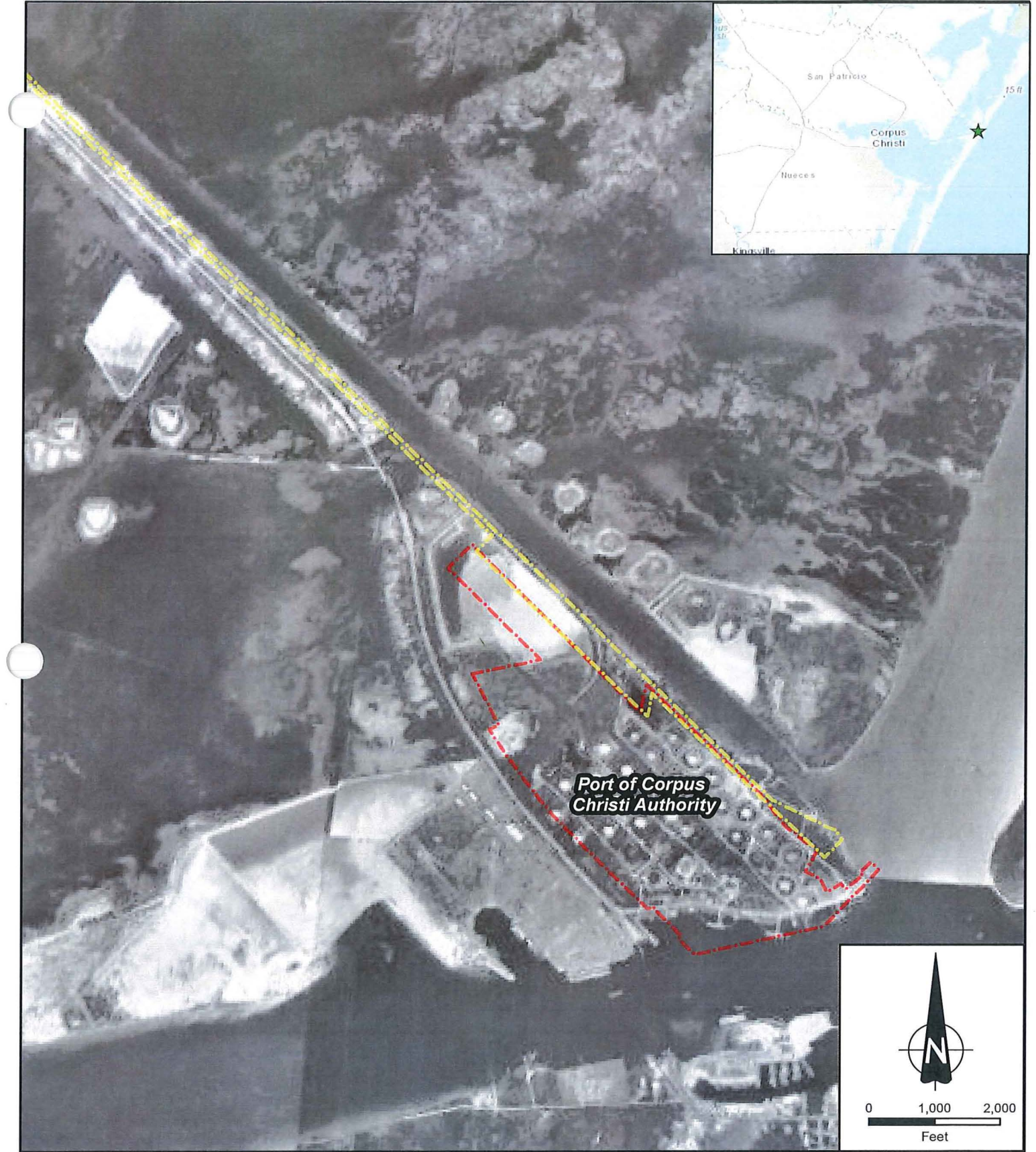
Historical Imagery 1978

Service Layer Credits: Image NASA, Image Texas General Land Office, Google Earth Pro, Imagery Date: 12/31/1978, Date: 06/13/2019

DATE	JUNE 2019
SCALE	1" = 2,000'
PROJECT NO.	6703180051
FIGURE	2

**wood.**

DRAWN BY: SD CHECKED BY:



**Port Of Corpus Christi Authority  
of Nueces County**



-  Right-Of-Way
-  Property Boundary
-  Site Location

**Historical Imagery 1984**



Service Layer Credits: Image NASA, Image Texas General Land Office, Google Earth Pro, Imagery Date: 12/31/1984, Date: 06/13/2019

DATE	JUNE 2019
SCALE	1" = 2,000'
PROJECT NO.	6703180051
FIGURE	3

DRAWN BY: SD CHECKED BY:



Port Of Corpus Christi Authority  
of Nueces County

-  Property Boundary
-  Site Location

**Historical Imagery 1995**

DATE  
JUNE 1919

SCALE  
1" = 2,000'

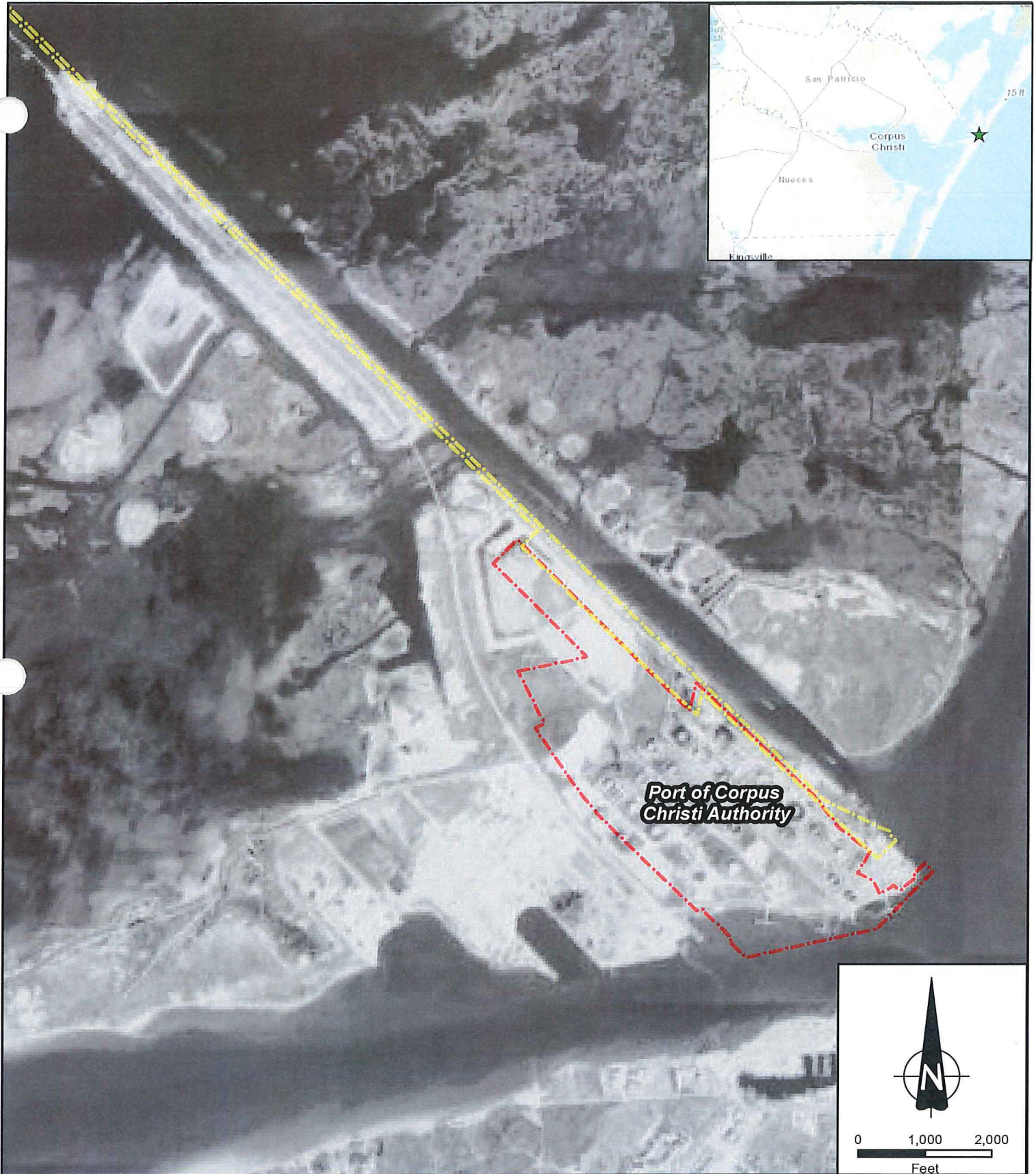


Service Layer Credits: Image NASA, Image Texas General Land Office, Google Earth Pro, Imagery Date: 01/06/1995, Date: 06/13/2019

PROJECT NO.  
6703180051

FIGURE  
4

DRAWN BY: SD CHECKED BY:



Port Of Corpus Christi Authority  
of Nueces County

-  Right-Of-Way
-  Property Boundary
-  Site Location

**wood.**

**Historical Imagery 2002**

Service Layer Credits: Image Landsat / Copernicus, Image Texas General Land Office, Image U.S. Geological Survey, Image NASA, Google Earth Pro, Imagery Date: 12/30/2002, Date: 06/17/2019

DATE	JUNE 2019
SCALE	1" = 2,000'
PROJECT NO.	6703180051
FIGURE	5

DRAWN BY: SD CHECKED BY:



Port Of Corpus Christi Authority  
of Nueces County

-  Right-Of-Way
-  Property Boundary
-  Site Location

Historical Imagery 2008

Service Layer Credits: TNRIS, Nueces  
Color/Color Infrared (4 Band) Date:  
06/13/2019

DATE  
JUNE 2019

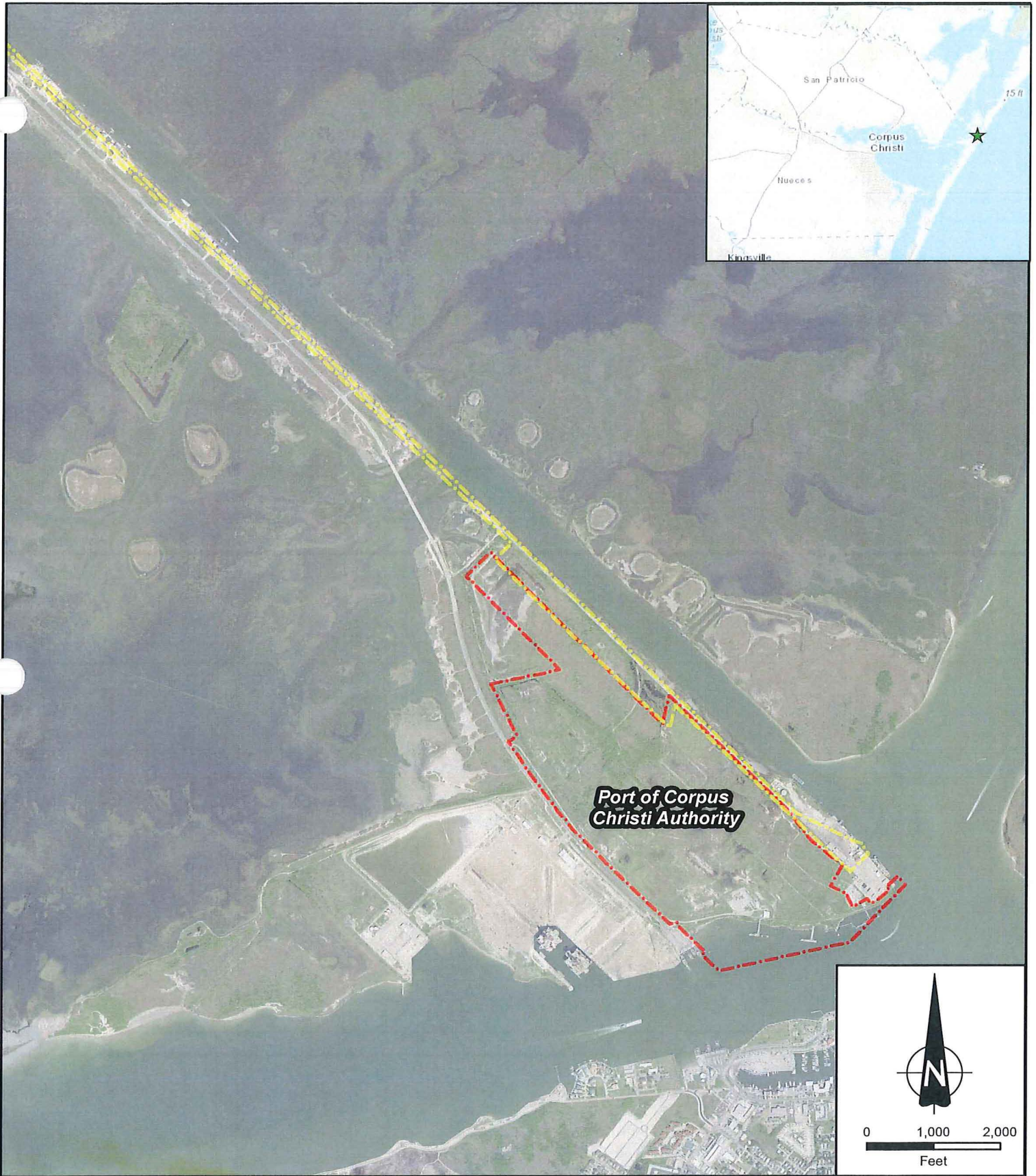
SCALE  
1" = 2,000'

PROJECT NO.  
6703180051

FIGURE  
6



DRAWN BY: SD CHECKED BY:



Port Of Corpus Christi Authority  
of Nueces County

-  Right-Of-Way
-  Property Boundary
-  Site Location

Historical Imagery 2016

Service Layer Credits: TNRIS, Date:  
06/13/2019

DATE	JUNE 2019
SCALE	1" = 2,000'
PROJECT NO.	6703180051
FIGURE	7



DRAWN BY: SD CHECKED BY: